

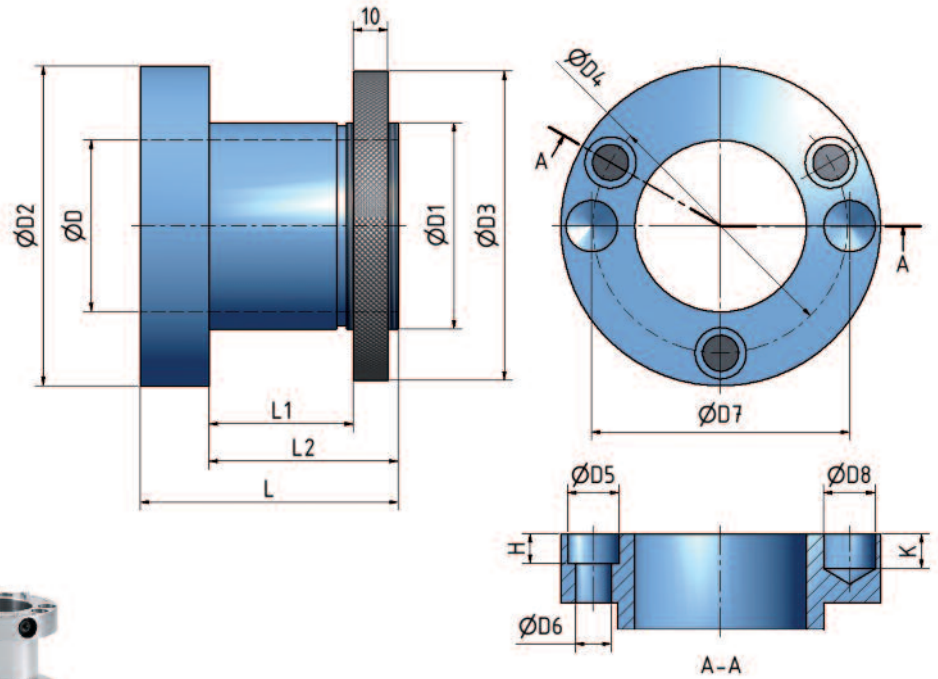


ETP HYDRO-GRIP® B

Sleeve for **interchangeable tool assembly**, the same basic construction as the BI with a thread and locking nut. This means the sleeve can be easily switched between different tools. Several tools can be mounted to the same sleeve. Pressurizing is carried out with a high pressure grease pump. This allows the use of longer sleeves.

Benefits and features

- Well establish design with thread and locking nut
- Several tools can be mounted on the same sleeve
- Perfect centering and fastening
- Pressurizing is carried out with a high pressure pump



Technical specification ETP HYDRO-GRIP® B

Type	D	D1	D2	D3	D4	D5	D6	D7	D8	H	K	L	L1	L2
B-40/50-75	40	50	83	83	64	10	6.0	65	15	5.5	10	75	40	55
B-40/50-115	40	50	83	83	64	10	6.0	65	15	5.5	10	115	80	95
B-40/60-75	40	60	93	90	74	14	9	75	15	8.5	10	75	40	55
B-40/60-95	40	60	93	90	74	14	9	75	15	8.5	10	95	60	75
B-40/60-115	40	60	93	90	74	14	9	75	15	8.5	10	115	80	95
B-40/60-165	40	60	93	90	74	14	9	75	15	8.5	10	165	130	145
B-40/60-215	40	60	93	90	74	14	9	75	15	8.5	10	215	180	195
B-45/60-75*	45	60	93	90	74	14	9	70	M8	8.5		75	40	55
B-45/60-95*	45	60	93	90	74	14	9	70	M8	8.5		95	60	75
B-45/60-115*	45	60	93	90	74	14	9	70	M8	8.5		115	80	95
B-45/60-140*	45	60	93	90	74	14	9	70	M8	8.5		140	105	120
B-45/60-190*	45	60	93	90	74	14	9	70	M8	8.5		190	155	170
B-50/60-75*	50	60	93	90	74	14	9	75	15	8.5	10	75	40	55
B-50/60-95*	50	60	93	90	74	14	9	75	15	8.5	10	95	60	75
B-50/60-115*	50	60	93	90	74	14	9	75	15	8.5	10	115	80	95
B-50/60-140*	50	60	93	90	74	14	9	75	15	8.5	10	140	105	120
B-50/60-190*	50	60	93	90	74	14	9	75	15	8.5	10	190	155	170
B-50/60-240*	50	60	93	90	74	14	9	75	15	8.5	10	240	205	220
B-60/70-75**	60	70	105	105	86	14	9	85	15	8.5	10	75	40	55
B-60/70-140**	60	70	105	105	86	14	9	85	15	8.5	10	140	105	120
B-60/70-190**	60	70	105	105	86	14	9	85	15	8.5	10	190	155	170
B-1 1/2"/50-85	1 1/2"	50	83	83	64	14	9	64	15	8.5	10	85	50	65
B-1 1/2"/50-135	1 1/2"	50	83	83	64	14	9	64	15	8.5	10	135	100	115
B-1 1/2"/50-185	1 1/2"	50	83	83	64	14	9	64	15	8.5	10	185	150	165
B-1 13/16"/60-75	1 13/16"	60	93	90	74	14	9	75	15	8.5	10	75	40	55
B-1 13/16"/60-115	1 13/16"	60	93	90	74	14	9	75	15	8.5	10	115	80	95
B-1 13/16"/60-190	1 13/16"	60	93	90	74	14	9	75	15	8.5	10	190	155	170
B-1 13/16"/65-85	1 13/16"	65	98	98	80	14	9	80	15	8.5	10	85	50	65
B-1 13/16"/65-135	1 13/16"	65	98	98	80	14	9	80	15	8.5	10	135	100	115
B-1 13/16"/65-185	1 13/16"	65	98	98	80	14	9	80	15	8.5	10	185	150	165
B-2 1/8"/65-85	2 1/8"	65	98	98	80	14	9	80	15	8.5	10	85	50	65
B-2 1/8"/65-135	2 1/8"	65	98	98	80	14	9	80	15	8.5	10	135	100	115
B-2 1/8"/65-185	2 1/8"	65	98	98	80	14	9	80	15	8.5	10	185	150	165

*) The sleeve has two, threaded M8-holes for carrier pegs on a 70 mm pitch diameter.

**) The sleeve has two, threaded M8-holes for carrier pegs on a 85 mm pitch diameter.

See page 44 for more information.